

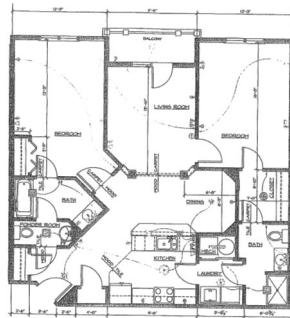


your resource for Affordable Housing

Newburyport Affordable Resale Unit Maritime Landing Two Bedroom Condominium \$177,500

Located at 6 Woodman Way, Unit 304 this third floor two bedroom, two bathroom condominium is available on a first come first basis for an eligible first time homebuyer. Elevated building, surface parking, balcony off living room, central air-conditioning, hard wood floors and all kitchen appliances included. Great location. Walk to stores. Easy access to Route 95. Income Limits as follows:

1 person: \$46,300, 2 person: \$52,950, 3 person: \$59,550, 4 person: \$66,150
Asset Limit: \$75,000



Close before April 30, 2010 and be eligible for \$8,000 tax credit!

For complete information and details contact
Maureen O'Hagan at:

(978) 456-8388

or

maureen@mcohousingservices.com

